

# Solutions for your most demanding applications







# Everflex

Eaton has been a pioneer in the production of hoses made with Teflon® resin. Everflex® hoses are ideally suited for use in applications where high and low temperature, chemical resistance, low coefficient of friction, flexibility, and non-aging characteristics are required. Since 1961, Everflex has been the premier brand of hose products made from Teflon resin for use in truck, chemical, hot melt, paper and pulp, hot presses, steam, packaging, paint, machinery and many other demanding applications.

Teflon® is a registered trademark of DuPont used under license by Eaton.

# Everflex hose and fittings

## Table of contents

<b>Application data</b>	<b>Section A</b>
Design considerations	A-4
Why Eaton Everflex hose?	A-5
Warranty	A-6
Approvals and certifications	A-6
<b>Everflex smooth bore hose and fittings</b>	<b>Section B</b>
S-TW series	B-8
SC-TW series	B-9
Crimp fittings	B-10
Field attachable fittings	B-13
<b>Everflex convoluted hose and fittings</b>	<b>Section C</b>
8000/8500 series	C-18
Conv-O-Crimp fittings	C-19
<b>Chemical resistance chart</b>	<b>Section D</b>
Eaton Everflex Teflon hoses	D-21

Application data

A

Smooth bore hose  
and fittings

B

Convoluted hose  
and fittings

C

Chemical resistance  
chart

D



# Design considerations

## Basic considerations in hose selection

### Smooth bore vs. convoluted

The primary differentiators between smooth and convoluted tubes are size and bend radius. Smooth bore hoses are generally only available in tube diameters of 26,9 mm or less, and they will have much greater minimum bend radii. For example, 26,9 mm smooth bore hose has a minimum bend radius of 228,6 mm while the same size convoluted hose has a minimum bend radius of only 76 mm. Convoluted hoses are also more resistant to collapse in vacuum. Smooth bore hoses tend to have a lower price than same-sized convoluted hoses.

### Fittings

Hoses made with Teflon can use crimp or reusable fittings. The choice is largely one of individual preference, since there are no significant performance differences between the systems. The convoluted hoses use a crimp fitting with a special insert design and factory-installed Teflon sleeve on the insert.

### Conductive vs. non-conductive Teflon

Hoses, typically fuel lines carrying low-viscosity hydrocarbons at high flow rates, tend to build-up static electrical charges that can arc through the Teflon to the braid. This can create a pin-hole in the Teflon. Specifying conductive Teflon will allow the static charge to bleed off harmlessly to the fitting.

### Braid material

304 Stainless is the baseline braid material for most hoses made with Teflon. 316 Stainless is the recommended material for marine hose applications.



## Why Eaton Everflex hose?

A

- Everflex hose made from Teflon resin has excellent temperature characteristics. It works well in high ambient, fluid or gas media temperatures for smooth bore hose +260°C (+500°F) and for convoluted hose + 204°C (+ 400°F). It works equally well in cryogenic applications for smooth bore hose -73°C (-100°F) and for convoluted hose -54°C (-65°F).
- Everflex hose has a broad range of chemical resistance. It is inert to most commercial chemicals, acids, alcohols, coolants, elastomers, petroleum compounds, solvents, vinyls, synthetic lubricants, and hydraulic fluids.
- Everflex hose withstands continuous flexing, vibration, or impulse
- Everflex hose is compatible with steam. It absorbs no moisture, hot or cold
- Everflex hose is non-contaminating conveyed materials, fluids, or gases will not contaminate in service. It is easy to clean and sterilize for FDA or pharmaceutical applications
- Everflex hose has high flow rates. Its low coefficient of friction with anti-stick properties insures continuous lower pressure drop during service with good pressure rating
- Everflex hose resists deterioration. It is impervious to weather and can be stored for long periods of time without aging
- Everflex hose has a long life expectancy when applied within its temperature and pressure ratings
- Everflex hose can handle many substances such as adhesives, asphalt, dyes, greases, glue, latex, lacquers and paints. It has no carbon build-up when used as a compressor discharge line

# Application data

## Approvals and certifications

A

### Warranty

Eaton hydraulics warranty policy is located at [www.hydraulics.eaton.com/warranty](http://www.hydraulics.eaton.com/warranty)

### Approvals and certifications

	<b>ABS</b>	<b>USCG</b>	<b>LR**</b>	<b>RINA**</b>	<b>DNV GL**</b>	<b>BV**</b>	<b>MED**</b>	<b>EN 45545***</b>
<b>S-TW*</b>	<b>X</b>		<b>X</b>	<b>X</b>	<b>X</b>	<b>X</b>	<b>X</b>	<b>X</b>
<b>8000*</b>		<b>X</b>						
ABS: American Bureau of Shipping								
USCG: US Coast Guard								
LR: Lloyd's Register of Shipping								
RINA: Registro Italiano Navale								
DNV GL: Det Norske Veritas Germanischer Lloyd								
BV: Bureau Veritas								
MED: Marine Equipment Directives								
EN 45545: European Railway Standards								

\* The listings above are intended only as guides in identifying which Aeroquip hoses comply with requirements of various agencies. For current and complete information, contact Eaton.

\*\*Reduced working pressure S-10TW to 103 bar and S-12TW to 83 bar

\*\*\* EN 45545 class R23/HL1



# Everflex smooth bore hose and fittings

Everflex smooth bore hose made from Teflon resin is specified in many of the most difficult applications across various industries. The extruded tube has excellent flex life, high temperature resistance and chemical resistance. Additionally, Everflex hose is an excellent choice in applications requiring steam cleaning of an assembly or transfer of a highly viscous media, such as adhesives, paints or food products.

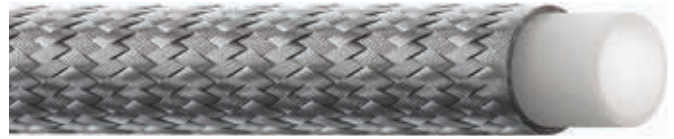
The 304 stainless steel wire reinforcement provides the strength necessary to carry the working pressure and the durability to withstand harsh environments. The optional 316 stainless steel braid is ideal for more corrosive environments. High temperature hydraulic and pneumatic systems, such as those found in steel mills, foundries and transit buses, are ideal locations to offer Everflex hose as a problem solver. Materials meet 21-CFR-177.1550 for use in food handling applications.



# S-TW Series

## Smooth bore

Everflex S-TW series tube is reinforced with 304 or 316 stainless steel wire and has a minimum wall thickness of 0,76 mm. The minimum bend radius is measured in mm to the inside bend. 316 Stainless braid can be used in marine and other environments where corrosion is an issue.



B

# Part number	Hose I.D.		Hose O.D.		Working pressure		Min. burst		Min. bend		Hose weight		Vacuum service In/hg	Hose ends	Crimp sockets
	mm	in	mm	in	bar	psi	bar	psi	mm	in	Kg/m	lbs/ft			
S-4TW	4.8	0.19	8.2	0.32	207	3,000	827	12,000	50.8	2	0.09	0.06	28	Crimp (page 10 to 12) Reusable (page 13 to 16)	GH25848-4S
S-5TW	6.4	0.25	10.1	0.4	207	3,000	827	12,000	76.2	3	0.12	0.08	28	Crimp (page 10 to 12) Reusable (page 13 to 16)	GH25848-5S
S-6TW	7.9	0.31	11.6	0.46	172	2,500	689	10,000	101.6	4	0.15	0.1	28 ‡	Crimp (page 10 to 12) Reusable (page 13 to 16)	GH25848-6S
S-8TW	10.4	0.41	14.3	0.56	138	2,000	552	8,000	127	5	0.18	0.12	28 ‡	Crimp (page 10 to 12) Reusable (page 13 to 16)	GH25848-8S
S-10TW*	12.7	0.5	16.8	0.66	121	1,750	483	7,000	165.1	6.5	0.25	0.17	28 ‡	Crimp (page 10 to 12) Reusable (page 13 to 16)	GH25848-10S
S-12TW*	15.7	0.62	20.1	0.79	103	1,500	414	6,000	190.5	7.5	0.28	0.19	28 ‡	Crimp (page 10 to 12) Reusable (page 13 to 16)	GH25848-12S
S-16TW	22.4	0.88	26.9	1.06	69	1,000	276	4,000	228.6	9	0.4	0.27	12 ‡	Crimp (page 10 to 12) Reusable (page 13 to 16)	GH25848-16S
<b>316 Stainless steel braid</b>															
S-4TW316SS	4.8	0.19	8.2	0.32	207	3,000	827	12,000	50.8	2	0.09	0.06	28	Crimp (page 10 to 12) Reusable (page 13 to 16)	GH25848-4S
S-16TW316SS	22.4	0.88	26.9	1.06	62	900	248	3,600	228.6	9	0.4	0.27	12 ‡	Crimp (page 10 to 12) Reusable (page 13 to 16)	GH25848-16S

### Construction

- Non-conductive Teflon inner tube
- One or two layers of stainless steel wire braid

### Applications

- Steam
- Compressor discharge
- Chemical transfer
- Meets SAE 100R14A

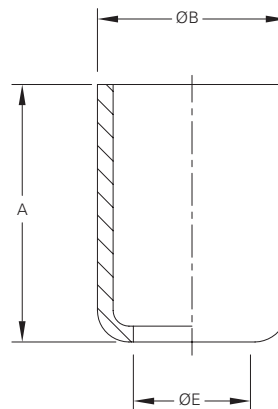
### Temperature range

- -73°C to +260°C (-100°F to +500°F)

**!** WARNING: These hoses can be used to convey hazardous chemicals, steam, hot liquids or other dangerous materials which can cause death, serious bodily injury including burns, pressure wounds or chemical exposure if released accidentally. They should, therefore, only be handled or worked on by personnel properly trained in the safe handling of the materials or chemicals conveyed in the hoses.

‡ Maximum negative pressure for -16 and larger are suitable for hose which has suffered no external damage or kinking. If greater negative pressures are required for -16 and larger hoses, the use of an internal support coil is recommended. Use of an internal support coil in -06 and larger hose is recommended for tube support where extended or continuous service at high temperature together with low or negative pressure is expected.

### Crimp sockets



# Part number	A	ØB	ØE
	mm	mm	mm
GH25848-4S	15.2	10.3	6.8
GH25848-5S	15.4	12.1	8.2
GH25848-6S	15.4	14.6	10
GH25848-8S	22.9	15.1	12.5
GH25848-10S	22.9	20.1	15.8
GH25848-12S	22.9	22.6	18.1
GH25848-16S	23.6	30.7	24.7

Note: Specification subject to change without notice



# SC-TW Series

## Smooth bore

Everflex S-TW Series tube is reinforced with 304 or 316 stainless steel wire and has a minimum wall thickness of 0,76 mm. The minimum bend radius is measured in mm to the inside bend. 316 Stainless braid can be used in marine and other environments where corrosion is an issue.



**B**

# Part number	Hose I.D.		Hose O.D.		Working pressure		Min. burst		Min. bend		Hose weight		Vacuum service In/hg	Hose ends	Crimp sockets
	mm	in	mm	in	bar	psi	bar	psi	mm	in	Kg/m	lbs/ft			
SC-4TW	4.8	0.19	8.2	0.32	207	3,000	827	12,000	50.8	2	0.09	0.06	28	Crimp (Page 10 to 12) Reusable (Page 13 to 16)	GH25848-4S
SC-5TW	6.4	0.25	10.1	0.4	207	3,000	827	12,000	76.2	3	0.12	0.08	28	Crimp (Page 10 to 12) Reusable (Page 13 to 16)	GH25848-5S
SC-6TW	7.9	0.31	11.6	0.46	172	2,500	689	10,000	101.6	4	0.15	0.1	28 ‡	Crimp (Page 10 to 12) Reusable (Page 13 to 16)	GH25848-6S
SC-8TW	10.4	0.41	14.3	0.56	138	2,000	552	8,000	127	5	0.18	0.12	28 ‡	Crimp (Page 10 to 12) Reusable (Page 13 to 16)	GH25848-8S
SC-10TW*	12.7	0.5	16.8	0.66	121	1,750	483	7,000	165.1	6.5	0.25	0.17	28 ‡	Crimp (Page 10 to 12) Reusable (Page 13 to 16)	GH25848-10S
SC-12TW*	15.7	0.62	20.1	0.79	103	1,500	414	6,000	190.5	7.5	0.28	0.19	28 ‡	Crimp (Page 10 to 12) Reusable (Page 13 to 16)	GH25848-12S
SC-16TW	22.4	0.88	26.9	1.06	69	1,000	276	4,000	228.6	9	0.4	0.27	12 ‡	Crimp (Page 10 to 12) Reusable (Page 13 to 16)	GH25848-16S
<b>316 Stainless steel braid</b>	<b>mm</b>	<b>in</b>	<b>mm</b>	<b>in</b>	<b>bar</b>	<b>psi</b>	<b>bar</b>	<b>psi</b>	<b>mm</b>	<b>in</b>	<b>Kg/m</b>	<b>lbs/ft</b>	<b>in/hg</b>		
SC-4TW316SS	4.8	0.19	8.2	0.32	207	3,000	827	12,000	50.8	2	0.09	0.06	28	Crimp (Page 10 to 12) Reusable (Page 13 to 16)	GH25848-4S
SC-16TW316SS	22.4	0.88	26.9	1.06	62	900	248	3,600	228.6	9	0.4	0.27	12 ‡	Crimp (Page 10 to 12) Reusable (Page 13 to 16)	GH25848-16S

### Construction

- Conductive Teflon inner tube
- One or two layers of 304 stainless steel wire braid provides a path to the hose end fittings for

### Applications

- Steam
- Compressor discharge
- Chemical transfer
- Meets 100R14B

### Temperature range

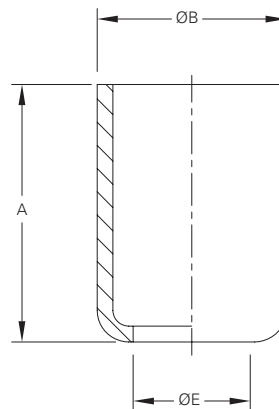
- 73°C to +260°C (-100°F to +500°F)

**⚠ WARNING:** These hoses can be used to convey hazardous chemicals, steam, hot liquids or other dangerous materials which can cause death, serious bodily injury including burns, pressure wounds or chemical exposure if released accidentally. They should, therefore, only be handled or worked on by personnel properly trained in the safe handling of the materials or chemicals conveyed in the hoses.

◇ "Z" Designates a double braid of 304 stainless steel wire.

‡ Maximum negative pressure for -16 and larger are suitable for hose which has suffered no external damage or kinking. If greater negative pressures are required for -16 and larger hoses, the use of an internal support coil is recommended. Use of an internal support coil in -06 and larger hose is recommended for tube support where extended or continuous service at high temperature together with low or negative pressure is expected. For a list of internal support coils available, see page

### Crimp sockets



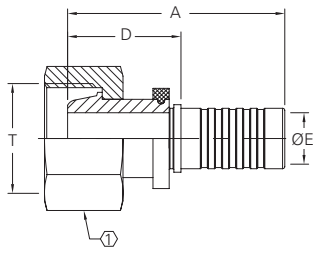
# Part number	A	ØB	ØE
	mm	mm	mm
GH25848-4S	15.2	10.3	6.8
GH25848-5S	15.4	12.1	8.2
GH25848-6S	15.4	14.6	10
GH25848-8S	22.9	15.1	12.5
GH25848-10S	22.9	20.1	15.8
GH25848-12S	22.9	22.6	18.1
GH25848-16S	23.6	30.7	24.7

# Crimp fittings

For use with Everflex hose S-TW and SC-TW

Standard plating available in Chrome III and additionally in Zi-Ni on customer request. Please contact Eaton for Zi-Ni plating.

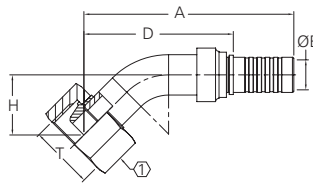
## Universal metric female swivel light series, 24° and 60° cone, straight



# Part number	Socket number	ND	Hose size	A	D	ØE	T	
				mm	mm	mm	TH'D	
GH15974-4	GH25848-4S	5	-04	36.2	21.2	3.2	M12x1,5	14
GH15974-5	GH25848-5S	6	-05	33.6	21.2	4.8	M14x1,5	17
GH15974-6	GH25848-6S	8	-06	35.4	23	6.3	M16x1,5	19
GH15974-8	GH25848-8S	10	-08	45.5	23	8.8	M18x1,5	22
GH15974-10	GH25848-10S	12	-10	47	24.5	11.1	M22x1,5	27
GH15974-12	GH25848-12S	16	-12	48	25.5	14.3	M26x1,5	32
GH15974-16	GH25848-16S	19	-16	50.5	28.1	16.1	M30x2	36

**Note:** Socket must be ordered separately

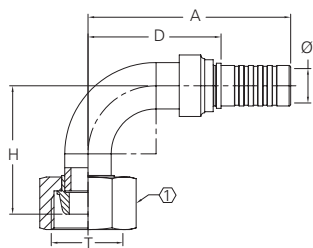
## Universal metric female swivel light series, 24° and 60° cone, 45° elbow



# Part number	Socket number	ND	Hose size	A	D	ØE	H	T	
				mm	mm	mm	mm	TH'D	
GH23053-4	GH25848-4S	5	-04	49.8	34.9	3.2	13.8	M12x1,5	14
GH23053-5	GH25848-5S	6	-05	55.5	43	4.5	16.8	M14x1,5	17
GH23053-6	GH25848-6S	8	-06	56.4	44	6	18.4	M16x1,5	19
GH23053-8	GH25848-8S	10	-08	67.8	45.4	8.6	18.6	M18x1,5	22
GH23053-10	GH25848-10S	12	-10	78	55.5	11	22.3	M22x1,5	27
GH23053-12	GH25848-12S	16	-12	80.1	57.6	14	24.6	M26x1,5	32
GH23053-16	GH25848-16S	19	-16	85.2	62.7	20.2	25.8	M30x2	36

**Note:** Socket must be ordered separately

## Universal metric female swivel light series, 24° and 60° cone, 90° elbow



# Part number	Socket number	ND	Hose size	A	D	ØE	H	T	
				mm	mm	mm	mm	TH'D	
GH18887-4	GH25848-4S	5	-04	43	28.1	3.2	26.5	M12x1,5	14
GH18887-5	GH25848-5S	6	-05	45.5	33	4.5	30.5	M14x1,5	17
GH18887-6	GH25848-6S	8	-06	47	34.6	6.3	35	M16x1,5	19
GH18887-8	GH25848-8S	10	-08	60.5	38.2	8.6	37.5	M18x1,5	22
GH18887-10	GH25848-10S	12	-10	65.5	43	11	41.5	M22x1,5	27
GH18887-12	GH25848-12S	16	-12	74	51.5	14.3	53	M26x1,5	32
GH18887-16	GH25848-16S	19	-16	77	54.5	20.3	54	M30x2	36

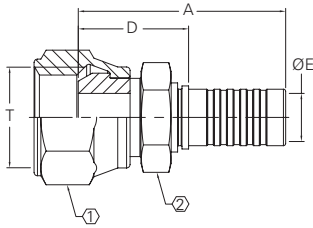
**Note:** Socket must be ordered separately

Note: Specification subject to change without notice

# Crimp fittings

For use with Everflex hose S-TW and SC-TW

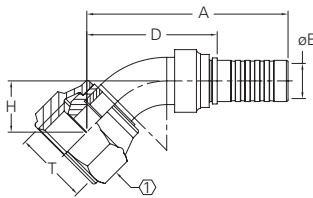
## BSP female swivel, 60° cone, straight



# Part number	Socket number	ND	Hose size	A	D	ØE	T	①	②
				mm	mm	mm	TH'D		
SH17909-4	GH25848-4S	5	-04	37.5	22.5	3.2	G 1/4"	17	12
SH17909-4-5	GH25848-5S	6	-05	35	22.5	4.8	G 1/4"	17	12
SH17909-6	GH25848-6S	8	-06	35.8	23.3	6.3	G 3/8"	22	17
SH17909-8	GH25848-8S	10	-08	47.3	24.8	8.8	G 1/2"	27	19
SH17909-10	GH25848-10S	12	-10	48	25.5	11.1	G 5/8"	27	22
SH17909-12	GH25848-12S	16	-12	48.3	25.8	14.3	G 3/4"	32	27
SH17909-16	GH25848-16S	19	-16	52.3	29.8	20.2	G 1"	41	30

**Note:** Socket must be ordered separately

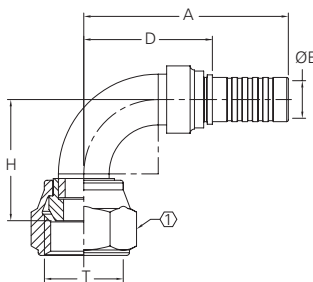
## BSP female swivel, 45° elbow



# Part number	Socket number	ND	Hose size	A	D	ØE	H	T	①
				mm	mm	mm	mm	TH'D	
SH18063-4	GH25848-4S	5	-04	46.7	31.7	3	12	G 1/4"	17
SH18063-4-5	GH25848-5S	6	-05	45.2	32.7	4.5	12	G 1/4"	17
SH18063-6	GH25848-6S	8	-06	49.3	36.9	6.3	14.4	G 3/8"	22
SH18063-8	GH25848-8S	10	-08	61.3	39	8.6	15.3	G 1/2"	27
SH18063-10	GH25848-10S	12	-10	64	41.5	11	16.3	G 5/8"	27
SH18063-12	GH25848-12S	16	-12	79.3	56.8	14.3	23.6	G 3/4"	32
SH18063-16	GH25848-16S	19	-16	101	78.5	20.2	32.5	G 1"	41

**Note:** Socket must be ordered separately

## BSP female swivel, 90° elbow



# Part number	Socket number	ND	Hose size	A	D	ØE	H	T	①
				mm	mm	mm	mm	TH'D	
SH17906-4	GH25848-4S	5	-04	40	25	3	22.2	G 1/4"	17
SH17906-4-5	GH25848-5S	6	-05	38.5	26	4.5	22.2	G 1/4"	17
SH17906-6	GH25848-6S	8	-06	43	30.6	6.3	28.5	G 3/8"	22
SH17906-8	GH25848-8S	10	-08	57	34.6	8.6	31.8	G 1/2"	27
SH17906-10	GH25848-10S	12	-10	60.5	38	11	36	G 5/8"	27
SH17906-12	GH25848-12S	16	-12	79	56.5	14.3	55.7	G 3/4"	32
SH17906-16	GH25848-16S	19	-16	92	69.5	20.2	69.2	G 1"	41

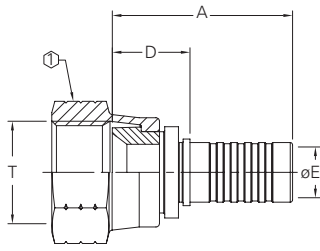
**Note:** Socket must be ordered separately



# Crimp fittings

For use with Everflex hose S-TW and SC-TW

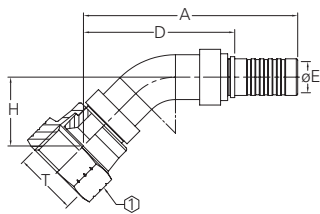
## SAE 37° swivel



#	Socket number	ND	Hose size	A	D	ØE	T	
Part number	Socket number			mm	mm	mm	TH'D	
GH19748-4	GH25848-4S	5	-04	28.2	13.3	3.2	7/16"-20 UNF	14
GH19748-5	GH25848-5S	6	-05	26.2	13.8	4.8	1/2"-20 UNF	17
GH19748-6	GH25848-6S	8	-06	27.2	14.8	6.3	9/16"-18 UNF	19
GH19748-8	GH25848-8S	10	-08	38.6	16.1	8.8	3/4"-16 UNF	22
GH19748-10	GH25848-10S	12	-10	39.5	17.1	11.1	7/8"-14 UNF	27
GH19748-12	GH25848-12S	16	-12	39	16.5	14.3	1 1/16"-12 UN	32
GH19748-16	GH25848-16S	19	-16	45.3	22.8	20.2	1 5/16"-12 UN	41

**Note:** Socket must be ordered separately

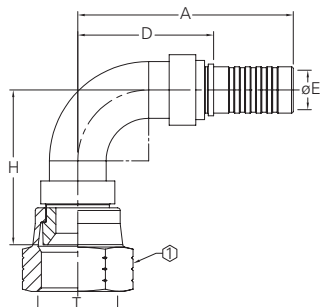
## SAE 37° swivel, 45° elbow



#	Socket number	ND	Hose size	A	D	ØE	H	T	
Part number	Socket number			mm	mm	mm	mm	TH'D	
GH19750-4	GH25848-4S	5	-04	51.8	36.9	3.2	15.9	7/16"-20 UNF	14
GH19750-5	GH25848-5S	6	-05	49	36.5	4.5	15.6	1/2"-20 UNF	17
GH19750-6	GH25848-6S	8	-06	52.8	40.4	6.3	17.9	9/16"-18 UNF	19
GH19750-8	GH25848-8S	10	-08	65.7	43.3	8.6	19.7	3/4"-16 UNF	22
GH19750-10	GH25848-10S	12	-10	76.6	54.1	11.1	24.7	7/8"-14 UNF	27
GH19750-12	GH25848-12S	16	-12	88.1	65.6	14.3	29.3	1 1/16"-12 UNF	32
GH19750-16	GH25848-16S	19	-16	106.1	83.6	20.2	37.6	1 5/16"-12 UNF	41

**Note:** Socket must be ordered separately

## SAE 37° swivel, 90° elbow



#	Socket number	ND	Hose size	A	D	ØE	H	T	
Part number	Socket number			mm	mm	mm	mm	TH'D	
GH19752-4	GH25848-4S	5	-04	43	28	3.2	29.5	7/16"-20 UNF	14
GH19752-5	GH25848-5S	6	-05	40.5	28	4.5	29	1/2"-20 UNF	17
GH19752-6	GH25848-6S	8	-06	43	30.6	6.3	33.5	9/16"-18 UNF	19
GH19752-8	GH25848-8S	10	-08	57	34.7	8.6	38	3/4"-16 UNF	22
GH19752-10	GH25848-10S	12	-10	60.8	38.3	11.1	43.8	7/8"-14 UNF	27
GH19752-12	GH25848-12S	16	-12	68	45.5	14.3	50.5	1 1/16"-12 UNF	32
GH19752-16	GH25848-16S	19	-16	76.5	54	20.3	61	1 5/16"-12 UNF	41

**Note:** Socket must be ordered separately

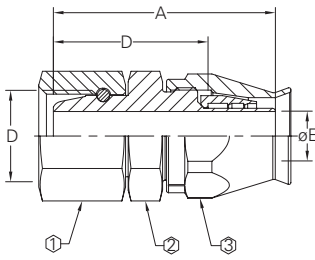
Note: Specification subject to change without notice

# Reusable fittings

## For use with Everflex hose S-TW and SC-TW

Standard plating available in Chrome III and additionally in Zi-Ni on customer request. Please contact Eaton for Zi-Ni plating.

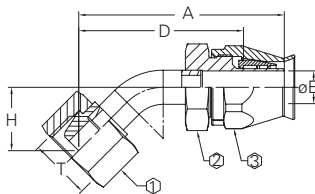
### 24° & 60° Globeseal swivel



# Part number	ND	Hose size	A	D	ØE	T	1	2	3
			mm	mm	mm	TH'D			
07.046-4-4	5	-04	39	28.6	4	M12X1,5	14	14	9/16"
07.046-6-5	6	-05	39	28.6	5	M14X1,5	17	17	5/8"
07.046-8-6	8	-06	40	29.6	7	M16X1,5	19	19	11/16"
07.046-10-8	10	-08	43.6	30.3	9	M18X1,5	22	22	7/8"
07.046-13-10	12	-10	45.5	31.6	12	M22X1,5	27	27	1"
07.046-16-12	16	-12	52	38	14.7	M26X1,5	32	32	1 1/8"
07.046-22-16	19	-16	54	41.7	21	M30X2	36	36	1 3/8"

**Note:** Socket must be ordered separately

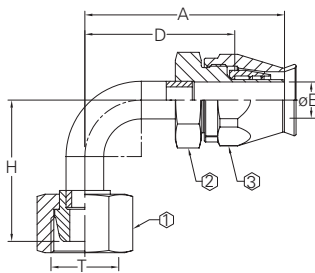
### 24° & 60° Globeseal swivel, 45° elbow



# Part number	ND	Hose size	A	D	ØE	H	T	1	2	3
			mm	mm	mm	mm	TH'D			
07.048-4-4	5	-04	49.2	38.8	4	15.2	M12X1,5	14	14	9/16"
07.048-6-5	6	-05	55.8	44.5	5.5	18.6	M14X1,5	17	17	5/8"
07.048-8-6	8	-06	59.5	48.2	7.1	20.5	M16X1,5	17	19	11/16"
07.048-10-8	10	-08	62.4	48.3	9.5	20.7	M18X1,5	22	22	7/8"
07.048-13-10	12	-10	76.5	61.8	12	25.8	M22X1,5	24	27	1"
07.048-16-12	16	-12	79.3	64.4	14.5	26.3	M26X1,5	27	32	1 1/8"
07.048-22-16	19	-16	87.7	74.6	21	29	M30X2	36	36	1 3/8"

**Note:** Socket must be ordered separately

### 24° & 60° Globeseal swivel, 90° elbow



# Part number	ND	Hose size	A	D	ØE	H	T	1	2	3
			mm	mm	mm	mm	TH'D			
07.049-4-4	5	-04	41.4	31.1	4	26.5	M12X1,5	14	14	9/16"
07.049-6-5	6	-05	44	33.6	5.7	30.5	M14X1,5	17	17	5/8"
07.049-8-6	8	-06	48	37.6	7.2	35	M16X1,5	19	17	11/16"
07.049-10-8	10	-08	53	39.8	9.6	37.5	M18X1,5	22	22	7/8"
07.049-13-10	12	-10	60.5	46.6	12	41.5	M22X1,5	27	24	1"
07.049-16-12	16	-12	71.5	57.5	14.7	53	M26X1,5	32	27	1 1/8"
07.049-22-16	19	-16	76	65.2	21	54	M30X2	36	36	1 3/8"

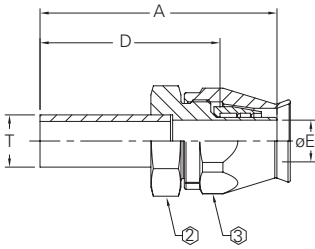
**Note:** Socket must be ordered separately

Note: Specification subject to change without notice

# Reusable fittings

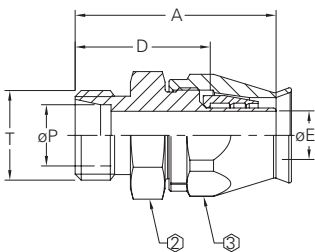
For use with Everflex hose S-TW and SC-TW

## Millimetric standpipe, LD



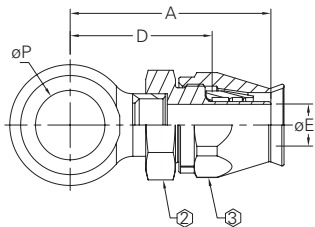
# Part number	ND	Hose size	A	D	ØE	T	2	3
			mm	mm	mm	TH'D		
07.050-6-4	5	-04	48	37.6	4	6	14	9/16"
07.050-8-5	6	-05	47.5	37.2	5.5	8	17	5/8"
07.050-10-6	8	-06	48.5	38.2	7	10	17	11/16"
07.050-12-8	10	-08	54.5	41.4	9.5	12	22	7/8"
07.050-15-10	12	-10	57	43.2	12	15	24	1"
07.050-18-12	16	-12	59.5	45.4	14.5	18	27	1 1/8"
07.050-22-16	19	-16	63.5	51.2	21	22	36	1 3/8"

## 24° Metric male, light duty



# Part number	ND	Hose size	A	D	ØE	T	ØP	2	3
			mm	mm	mm	TH'D	mm		
07.056-6-4	5	-04	36	25.6	4	M12X1,5	6	14	9/16"
07.056-8-5	6	-05	35.5	25.1	5.5	M14X1,5	8	17	5/8"
07.056-10-6	8	-06	36.5	26.1	7	M16X1,5	10	19	11/16"
07.056-12-8	10	-08	40	26.9	9.5	M18X1,5	12	22	7/8"
07.056-15-10	12	-10	43	29.1	12	M22X1,5	15	24	1"
07.056-18-12	16	-12	45.5	31.4	14.5	M26X1,5	18	27	1 1/8"
07.056-22-16	19	-16	49.5	37.2	21	M30X2	22	32	1 3/8"

## Banjo



# Part number	ND	Hose size	A	D	ØE	ØP	2	3
			mm	mm	mm	mm		
07.051-4-4	5	-04	38.5	28.1	4	10.1	14	9/16"
07.051-6-5	6	-05	40.5	30.2	5.5	12.1	17	5/8"
07.051-8-6	8	-06	40.5	30.2	7	14.1	17	11/16"
07.051-10-8	10	-08	46	32.9	9.5	16.1	22	7/8"
07.051-13-10	12	-10	51	37.2	12	18.1	24	1"
07.051-16-12	16	-12	55	40.9	14.5	22.1	27	1 1/8"
07.051-20-16	19	-16	62.5	50.2	21	26.1	36	1 3/8"

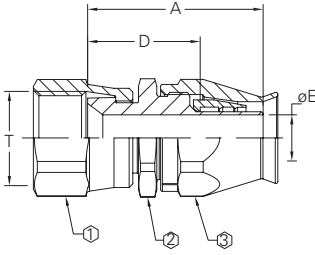
Note: Specification subject to change without notice



# Reusable fittings

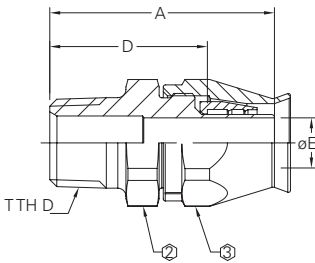
For use with Everflex hose S-TW and SC-TW

## SAE 37° Swivel



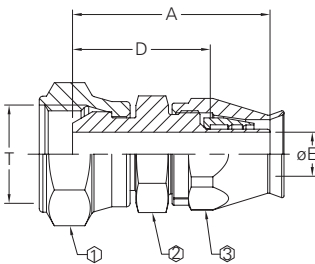
#	ND	Hose size	A	D	ØE	T	1	2	3
Part number			mm	mm	mm	TH'D			
G190600-4	5	-04	29.6	19	4	7/16"-24 UNF	9/16"	9/16"	9/16"
G190600-5	6	-05	30	19.6	5.5	1/2"-20 UNF	5/8"	5/8"	5/8"
G190600-6	8	-06	31.2	20.8	7	9/16"-18 UNF	11/16"	11/16"	11/16"
G190600-8	10	-08	36.5	23.4	9	3/4"-16 UNF	7/8"	7/8"	7/8"
G190600-10	12	-10	40	26.2	12	7/8"-14 UNF	1"	1"	1"
G190600-12	16	-12	42.1	28	14.5	1 1/16"-12 UNF	1 1/4"	1 1/4"	1 1/8"
G190600-16	19	-16	45.6	33.2	21	1 5/16"-12 UNF	1 1/2"	1 1/2"	1 3/8"

## Male pipe



#	ND	Hose size	A	D	ØE	T	2	3
Part number			mm	mm	mm	TH'D		
G190627-2-4	5	-04	33.5	22.9	4	1/8"-27 NPTF	9/16"	9/16"
G190627-4-4	5	-04	38.1	27.5	4	1/4"-18 NPTF	9/16"	9/16"
G190627-4-5	6	-05	37.9	27.5	5.5	1/4"-18 NPTF	5/8"	5/8"
G190627-4-6	8	-06	39.5	29.4	7	1/4"-18 NPTF	11/16"	11/16"
G190627-6-6	8	-06	39.5	29.1	7	3/8"-18 NPTF	11/16"	11/16"
G190627-8-6	8	-06	44.3	33.9	7	1/2"-14 NPTF	7/8"	11/16"
G190627-6-8	10	-08	43.1	48.2	9.6	3/8"-18 NPTF	7/8"	7/8"
G190627-8-10	12	-10	51.5	37.4	12	1/2"-14 NPTF	1"	1"
G190627-12-12	16	-12	55.2	41.1	14.5	3/4"-14 NPTF	1 1/8"	1 1/8"
G190627-16-16	19	-16	60.1	47.7	21	1-11 1/2" NPTF	1 3/8"	1 3/8"

## BSP female swivel



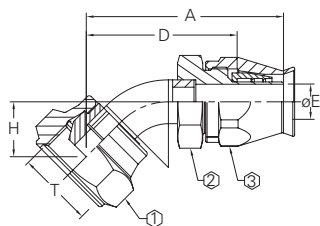
#	ND	Hose size	A	D	ØE	T	1	2	3
Part number			mm	mm	mm	TH'D			
07.022-4-4	5	-04	37	26.5	4	G 1/4"	17	17	9/16"
07.022-6-6	8	-06	38	27.6	7	G 3/8"	22	22	11/16"
07.022-8-8	10	-08	43	31.3	9.5	G 1/2"	27	27	7/8"
07.022-10-10	12	-10	45.5	31.5	12	G 5/8"	27	27	1"
07.022-12-12	16	-12	50	36	14.5	G 3/4"	32	32	1 1/8"
07.022-16-16	19	-16	52	39.5	21	G 1"	41	41	1 3/8"

Note: Specification subject to change without notice

# Reusable fittings

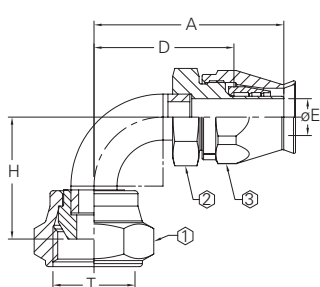
For use with Everflex hose S-TW and SC-TW

## BSP Female swivel, 45° elbow



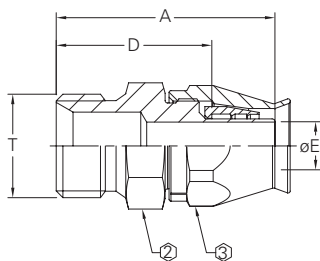
#	Part number	ND	Hose size	A	D	ØE	H	T	1	2	3
				mm	mm	mm	mm	TH'D			
	07.633-4-4	5	-04	46.5	36	4	12	G 1/4"	17	14	9/16"
	07.633-6-6	8	-06	50.5	40.1	7	14.5	G 3/8"	22	17	11/16"
	07.633-8-8	10	-08	54	42.3	9.5	15	G 1/2"	27	22	7/8"
	07.633-10-10	12	-10	59	45	12	16.5	G 5/8"	27	24	1"
	07.633-12-12	16	-12	75.5	61.5	14.5	22.5	G 3/4"	32	27	1 1/8"
	07.633-16-16	19	-16	100	87.5	21	32.5	G 1"	41	36	1 3/8"

## BSP Female swivel, 90° elbow



#	Part number	ND	Hose size	A	D	ØE	H	T	1	2	3
				mm	mm	mm	mm	TH'D			
	07.339-4-4	5	-04	38.5	28	4	22.2	G 1/4"	17	14	9/16"
	07.339-6-6	8	-06	44	23	7	28.5	G 3/8"	22	17	11/16"
	07.339-8-8	10	-08	49.5	25.1	9.5	31.8	G 1/2"	27	22	7/8"
	07.339-10-10	12	-10	55.5	28.7	12	36	G 5/8"	27	24	1"
	07.339-12-12	16	-12	76.5	48	14.5	55.7	G 3/4"	32	27	1 1/8"
	07.339-16-16	19	-16	91	78.5	21	69.2	G 1"	41	36	1 3/8"

## BSP male parallel



#	Part number	ND	Hose size	A	D	ØE	T	2	3
				mm	mm	mm	TH'D		
	07.180-4-4	5	-04	37.5	27	4	G 1/4"	14	9/16"
	07.180-6-6	8	-06	38.5	28.1	7	G 3/8"	19	11/16"
	07.180-8-8	10	-08	44	32.3	9.5	G 1/2"	22	7/8"
	07.180-10-10	12	-10	49	35	12	G 5/8"	24	1"
	07.180-12-12	16	-12	52.5	38.5	14.5	G 3/4"	32	1 1/8"
	07.180-16-16	19	-16	56	43.5	21	G 1"	36	1 3/8"

Note: Specification subject to change without notice





# Everflex convoluted hose and fittings

Everflex Conv-O-Crimp 8000 and 8500 Series hose provides excellent performance, reliability and durability with tighter bend radii than smooth wall hose. When compared with large diameter rubber hose, Conv-O-Crimp is dramatically lighter weight, more flexible, and more resistant to heat and chemicals. The tube is fabricated with tape of Teflon and reinforced with 304 stainless steel wire. The result is a product ideally suited for

applications in truck and bus, chemical processing, food processing, hydraulics, pharmaceutical, tire manufacturing, steel mills, and many others. In addition to the standard 8000 Series virgin white tube of Teflon, the 8500 Series has an internal conductive static dissipating black liner that provides a path to the hose end fitting for applications where flow induced electrostatic charges can occur.





# Everflex convoluted hose and fittings

## 8000/8500 series

Additional to Conv-O-Crimp fittings the convoluted hose is also qualified with OTC fittings but not recommended for the conveyance of air or any other kind of gases.



# Part Number	Hose size	Hose I.D.	Nominal I.D.	Max nominal O.D.	Working pressure	Burst pressure	Min. bend radius	Hose vacuum	Hose weight	Socket part numbers
			mm	mm	bar	bar	mm	mbar	kg/m	
<b>Non-conductive</b>										
8008	-8	1/2	14,4	20,5	103	414	38	28	.23	870000-8-CZ
8012	-12	3/4	21,0	27,9	86	345	63	28	.31	870000-12-CZ
8016	-16	1	26,9	34,0	62	248	76	20	.42	870000-16-CZ
8020	-20	1-1/4	33,2	40,6	62	248	89	12	.52	870000-20-CZ
8024	-24	1-1/2	40,1	46,4	52	207	114	10	.59	870000-24-CZ
8032	-32	2	52,3	60,4	34	138	152	5	.86	870000-32-CZ
<b>Conductive</b>										
8508	-8	1/2	14,4	20,5	103	414	38	28	.23	870000-8-CZ
8512	-12	3/4	21,0	27,9	86	345	63	28	.31	870000-12-CZ
8516	-16	1	26,9	34,0	62	248	76	20	.42	870000-16-CZ
8520	-20	1-1/4	33,2	40,6	62	248	89	12	.52	870000-20-CZ
8524	-24	1-1/2	40,1	46,4	52	207	114	10	.59	870000-24-CZ
8532	-32	2	52,3	60,4	34	138	152	5	.86	870000-32-CZ

### Construction

- Convoluted Teflon tube with 304 stainless steel wire braid reinforcement

### Temperature range

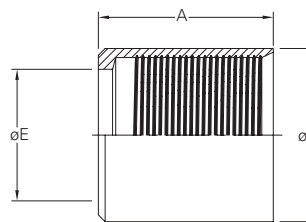
- -54°C to + 204°C (-65°F to + 400°F)

### Industrial applications

- Automotive
- Platen presses
- Pharmaceutical
- Bus & truck
- Reverse osmosis
- Hydraulics
- Chemical processing
- Steam, Air, Water
- Tire Manufacturing
- Electronics
- Steel mills
- Food processing
- Tank truck transfer

**⚠ WARNING:** These hoses can be used to convey hazardous chemicals, steam, hot liquids or other dangerous materials which can cause death, serious bodily injury including burns, pressure wounds or chemical exposure if released accidentally. They should, therefore, only be handled or worked on by personnel properly trained in the safe handling of the materials or chemicals conveyed in the hoses.

### Crimp sockets



# Part number	Hose size	A	øB	øE
		mm	mm	mm
870000-8-CZ	-08	28.8	24.3	17.1
870000-12-CZ	-12	32.8	32.4	24.6
870000-16-CZ	-16	35.1	38.8	30.5
870000-20-CZ	-20	35.1	45.1	36.9
870000-24-CZ	-24	35.1	51.6	43.1
870000-32-CZ	-32	41.8	66.2	57.8

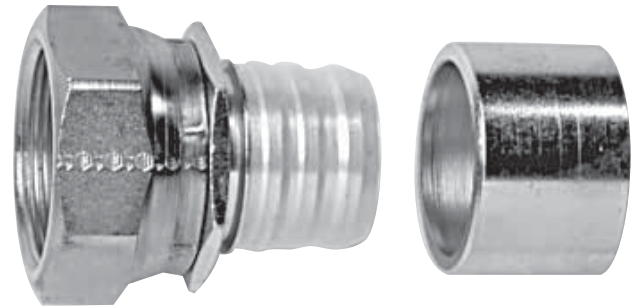
Note: Specification subject to change without notice

# Convoluted hose fittings

## Conv-O-Crimp fittings

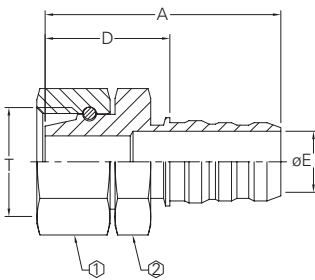
Standard plating available in Chrome III and additionally in Zi-Ni on customer request. Please contact Eaton for Zi-Ni plating.

The unique Everflex Conv-O-Crimp hose end are shipped with factory-installed Teflon sleeves on the insert. This eliminates the time consuming, costly and subjective step of wrapping the hose end with Teflon tape before assembly. The end result is a hose assembly system that is second to none in ease of assembly fabrication.



## Conv. O Crimp DKO

### 24° DKO metric swivel, light duty

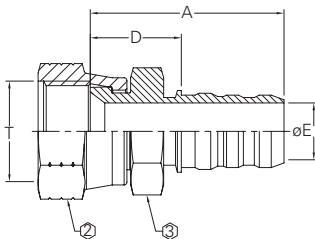


#	Part number	Socket number	Tube O.D.	ND	Hose size	A	D	ØE	T	1	2
						mm	mm	mm	TH'D		
	G820108-8-CZ	870000-8-CZ	12	12	-08	52.3	28.8	10.4	M18X1,5	22	22
	G820112-12-CZ	870000-12-CZ	18	19	-12	59.5	31.5	15.4	M26X1,5	32	32
	G820116-16-CZ	870000-16-CZ	22	25	-16	64.3	34.2	21.1	M30X2	36	36
	G820120-20-CZ	870000-20-CZ	28	31	-20	65.3	35.1	21.1	M36X2	41	41
	G820124-24-CZ	870000-24-CZ	35	38	-24	66.3	36.1	33.2	M45X2	50	50
	G820132-32-CZ	870000-32-CZ	42	51	-32	76.6	39.1	44.5	M52X2	60	60

**Note:** Socket must be ordered separately

## Conv. O Crimp JIC

### SAE 37° Swivel, crimp type

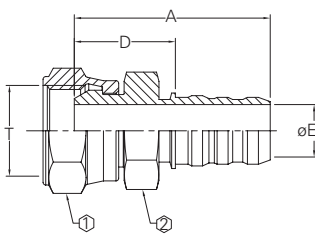


#	Part number	Socket number	ND	Hose size	A	D	ØE	T	1	2
					mm	mm	mm	TH'D		
	G820008-8-CZ	870000-8-CZ	12	-08	46	22.4	9.9	3/4"-16 UN	22	22
	G820012-12-CZ	870000-12-CZ	19	-12	52.8	24.8	15.5	11/16"-12 UN	32	30
	G820016-16-CZ	870000-16-CZ	25	-16	57.7	27.6	21.1	1 5/16"-12 UN	41	41
	G820020-20-CZ	870000-20-CZ	31	-20	60.5	30.3	27.5	1 5/8"-12 UN	50	50
	G820024-24-CZ	870000-24-CZ	38	-24	63.9	33.7	33.2	1 7/8"-12 UN	60	60
	G820032-32-CZ	870000-32-CZ	51	-32	72.8	35.3	44.5	2 1/2"-12 UN	75	70

**Note:** Socket must be ordered separately

## Conv. O Crimp BSP

### BSP Female swivel

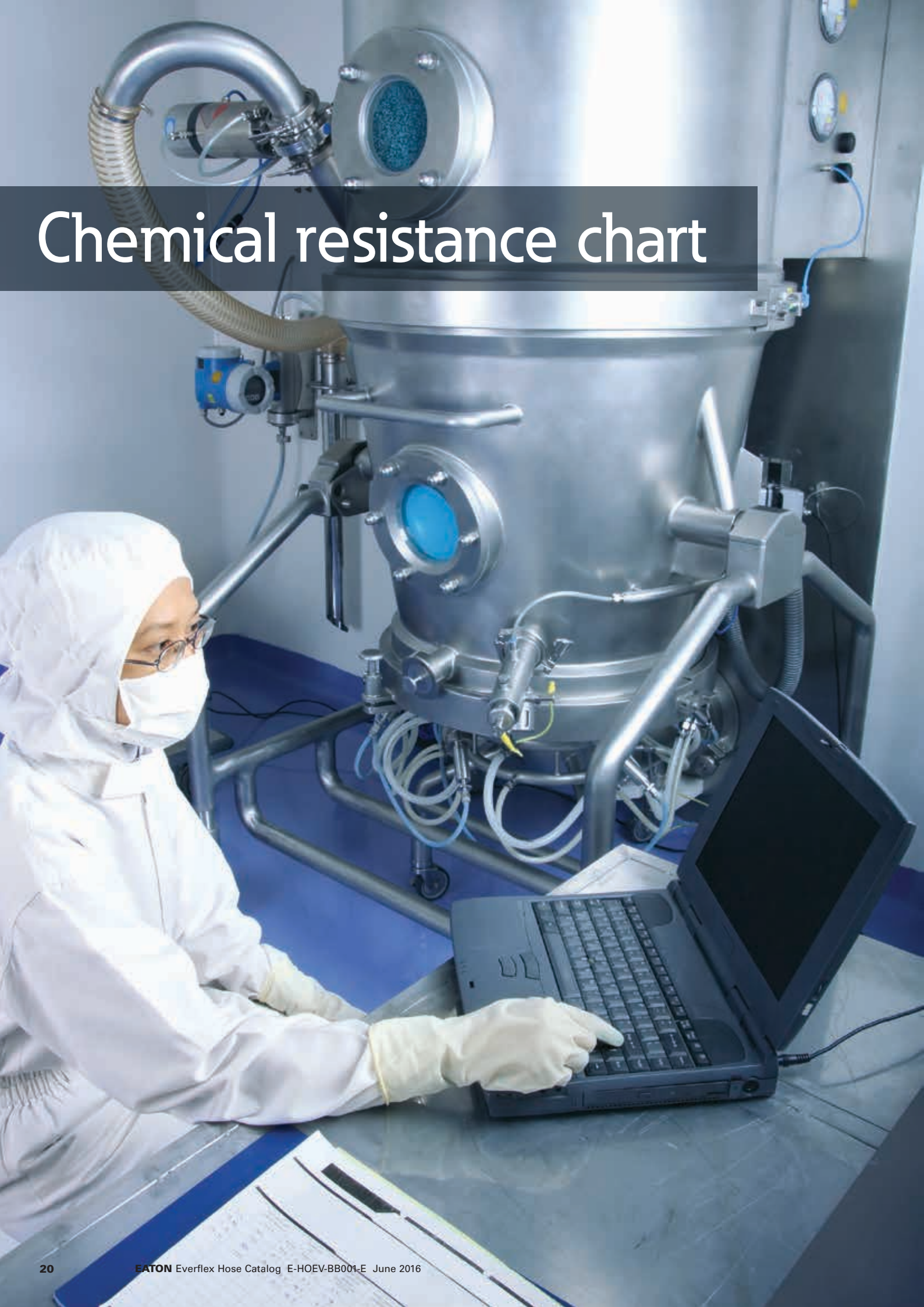


#	Part number	Socket number	ND	Hose size	A	D	ØE	T	1	2
					mm	mm	mm	TH'D		
	G820208-8-CZ	870000-8-CZ	12	-08	49.4	25.8	9.6	G 1/2"	27	22
	G820212-12-CZ	870000-12-CZ	19	-12	57.8	29.8	15.5	G 3/4"	32	30
	G820216-16-CZ	870000-16-CZ	25	-16	63	32.8	21.1	G 1"	41	36
	G820220-20-CZ	870000-20-CZ	31	-20	64	33.8	27.5	G1" 1/4	50	46
	G820224-24-CZ	870000-24-CZ	38	-24	68.1	38	33.2	G 1" 1/2	55	50
	G820232-32-CZ	870000-32-CZ	51	-32	78.5	41	44.4	G 2"	70	60

**Note:** Socket must be ordered separately

Note: Specification subject to change without notice

# Chemical resistance chart



# Chemical resistance chart

## Eaton Everflex Teflon hoses

Key:  
 1- Excellent  
 2- Good  
 3- Not recommended  
 0- No information -  
 test before using

### Partial list of chemicals

This chart has been prepared as a guide only and is NOT a guarantee. The number of variables present in any particular chemical environment makes firm ratings impossible. Testing under actual service conditions is advisable in all cases to establish suitability of hose for a given purpose.

End fitting material compatibility ratings are based on a fluid temperature of 70° and higher temperatures may accelerate adverse affects. Where unusual conditions exist, or where questions arise, please consult Eaton Technical Support for assistance.

Media	Eaton Everflex Teflon hose	Eaton Teflon fittings in carbon steel
Acetaldehyde	1	1
Acetic acid 10%	1	3
Acetic acid 30%	1	3
Acetic acid glacial	1	0
Acetic Anhydride	1	3
Acetone	1	1
Acetylene	1	0
Acrylonitrile	1	1
Acetyl Chloride	0	0
Alcohols	1	3
Allyl Chloride	0	0
Alum, Ammonium		
Or Potassium	1	3
Aluminum Acetate	1	0
Aluminum Bromide	1	3
Aluminum Chloride	1	3
Aluminum Fluoride	1	3
Aluminum Hydroxide	1	0
Aluminum Nitrite	1	3
Aluminum Oxychloride	0	0
Aluminum Salts	1	0
Aluminium Sulfate	1	3
Ammonia, Anhydrous	1	1
Ammonia, Aqueous	1	0
Ammonium Acetate	0	0
Ammonium Carbonate	0	1
Ammonium Chloride	1	0
Ammonium Fluoride	0	0
Ammonium Hydroxide	1	2
Ammonium Metaphosphate	1	1
Ammonium Nitrate	1	1
Ammonium Nitrite	0	0
Ammonium Persulfate	0	0
Ammonium Phosphate	1	3
Ammonium Sulfate	1	1
Ammonium Thiocyanate	1	1
Amyl Acetate	1	3
Amyl Alcohol	1	1
Amyl Chloride	1	0

Media	Eaton Everflex Teflon hose	Eaton Teflon fittings in carbon steel
Amyl Chloronaphthalene	1	0
Amyl Naphthalene	1	0
Aniline	1	2
Aniline Dyes	1	3
Aniline Hydroxide	1	0
Animal Fats	1	1
Antimony Chloride	0	0
Antimony Trochloride	0	0
Aqua Regia	1	0
Arsenic Acid	1	2
Askarel	0	1
Asphalt	1	1
Barium Carbonate	1	2
Barium Chloride	1	3
Barium Hydroxide	1	2
Barium Sulfate	1	1
Barium Sulfide	1	3
Beer	1	2
Beet Sugar Liquids	1	1
Benzene	1	1
Benzenesulfonic Acid	0	3
Benzalsdehyde	1	1
Benzine	1	1
Benzyl Alcohol	1	1
Benzonic Acid	0	0
Benzoyl Chloride	0	0
Benzyl Benzoate	1	1
Benzyl Chloride	1	1
Bismuth Carbonate	1	1
Black Sulphate Liquor	1	1
Blast Furnace Gas	1	1
Borax	1	2
Bordeaux Mixture	1	0
Boric Acid	1	3
Brine	1	2
Bromine Gas	1	3
Bromine Liquid	1	3
Bromine Water	1	3
Bunker Oil	1	1

D



# Chemical resistance chart

## Eaton Everflex Teflon hoses

D

Media	Eaton Everflex Teflon hose	Eaton Teflon fittings in carbon steel
Butadiene	1	0
Butane	1	1
Butter Oil	1	1
Butyric Acid	1	3
Butyl Acetate	1	2
Butyl Alcohol	1	1
Butyl Amine	0	1
Butyl Carbitol	1	1
Butyl Chloride	0	0
Butyl Phenol	0	0
Butyl Stearate	1	1
Butyl Mercaptan	1	0
Butyraldehyde	1	0
Cadmium Cyanide	0	0
Calcium Acetate	1	1
Calcium Bisulfate	1	0
Calcium Carbonate	1	1
Calcium Chlorate	1	0
Calcium Chloride	1	3
Calcium Hydroxide	1	3
Calcium Hypochlorite	1	0
Calcium Nitrate	1	1
Calcium Silicate	1	1
Calcium Sulfate	1	1
Calcium Sulfide	1	1
Calcium Phosphate	0	0
Cane Sugar Liquors	1	1
Caprylic Acid	0	0
Carbonic Acid	1	3
Carbon Dioxide	1	1
Carbon Disulfide	0	2
Carbonic Acid	1	3
Carbon Monoxide	1	1
Carbon Tetrachloride	1	3
Castor Oil	1	1
Caustic Soda	1	2
Cellosolve, Acetate	1	1
Cellosolve, Butyl	1	1
Cellulube	1	1
Cetyl Alcohol	0	0
Chloroacetic Acid	1	3
Chloral Hydrate	0	0
Chlorine, Gaseous, Dry	1	2
Chlorine, Gaseous, Wet	1	3
Chlorine, Trifluoride	0	3
Chloroacetic, Acid	1	3
Chlorobenzene	1	1
Chloribenzene Chloride	0	0

Media	Eaton Everflex Teflon hose	Eaton Teflon fittings in carbon steel
Chlorobromomethane	1	1
Chloroform	1	1
O-Chloronaphthalene	1	1
Chlorosulfonic Acid	1	3
Chlorotoluene	1	1
Chromium Trioxide	0	0
Chromic Acid	1	3
Citric Acid	1	3
Cod Liver Oil	1	1
Code Oven Gas	1	1
Copper Chloride	1	3
Copper Cyanide	1	0
Copper Fluoride	0	0
Copper Nitrate	0	0
Copper Sulfate	1	3
Corn Oil	1	1
Corn Syrup	1	1
Cottonseed Oil	1	1
Creosote	1	2
Cresol	1	2
Cresylic Acid	0	0
Crude Wax	1	1
Cutting Oil	1	1
Cyclohexane	1	1
Cyclohexanone	1	0
Cymene	1	0
Decalin	1	0
Denatured Alcohol	1	1
Diacetone	1	1
Diacetone Alcohol	1	1
Dibenzyl Ether	1	1
Dibutyl Ether	1	1
Dibutyl Phthalate	1	1
Dibutyl Sebacate	1	0
Dichlorethylene	0	0
Dichlorobenzene	1	0
Diesel Oil	1	1
Diethylamine	1	0
Diethyl Ether	1	1
Diethylene Glycol	1	1
Diethyl Phthalate	1	0
Diethyl Sebacate	1	0
Di-Isobutylene	0	0
Di-Isopropyl Ketone	1	0
Dimethyl Aniline	1	0
Dimethyl Formamide	0	1
Dimetyl Phthalate	1	0
Diocetyl Phthalate	1	1

# Chemical resistance chart

## Eaton Everflex Teflon hoses

Key:  
 1- Excellent  
 2- Good  
 3- Not recommended  
 0- No information -  
 test before using

Media	Eaton Everflex Teflon hose	Eaton Teflon fittings in carbon steel
Dioxane	1	1
Dipentene	1	1
Ethanolamine	1	1
Ethers	1	1
Ethyl Acetate	1	1
Ethyl Acetoacetate	1	1
Ethyl Acrylate	0	1
Ethyl Alcohol	1	1
Ethyl Benzene	1	1
Ethyl Bromide	0	0
Ethyl Cellulose	1	1
Ethyl Chloride	1	2
Ethyl Ether	1	2
Ethyl Lactate	0	0
Ethyl Mercaptan	1	2
Ethyl Pentochlorobenzene	1	2
Ethyl Silicate	1	1
Ethylene Chloride	1	2
Ethylene Chlorohydrin	1	0
Ethylene Diamine	1	0
Ethylene Dichloride	1	3
Ethylene Glycol	1	2
Ethylene Oxide	0	0
Fatty Acids	1	0
Ferric Chloride	1	3
Ferric Nitrate	1	3
Ferric Sulfate	1	3
Ferrous Chloride	1	3
Ferrous Nitrate	1	0
Ferrous Sulfate	1	3
Fluorine	0	0
Fluoroboric Acid	1	0
Formaldehyde	1	0
Formic Acid	1	3
Freon 12	2	3
Freon 114	2	3
Fuel Oil	1	2
Fumaric Acid	0	0
Furan Furfuran	1	1
Furfural	1	2
Gallic Acid	1	3
Gasoline	1	2
Glauber's Salt	0	1
Glucose	1	1
Glue	1	2
Glycerin	1	2
Glycerol	1	1
Glycols	1	1
Green Sulphate Liquor	1	1

Media	Eaton Everflex Teflon hose	Eaton Teflon fittings in carbon steel
Heptane	1	1
n-Hexaldehyde	1	1
Hexane	1	1
Hexene	1	1
Hexyl Alcohol	1	1
Hydraulic Oil, Petroleum	1	1
Hydrobromic Acid 10%	1	3
Hydrobromic Acid 30%	1	3
Hydrochloric Acid 10%	1	3
Hydrochloric Acid 50%	1	3
Hydrochloric Acid Concentrate	1	3
Hydrocyanic Acid	1	3
Hydrofluoric Acid Concentrated	1	3
Hydrofluoric Acid 40%	1	3
Hydrofluoric Acid 60%	1	3
Hydrofluosilicic Acid	1	3
Hydrogen Bromide	0	0
Hydrogen Gaseous	1	1
Hydrogen Peroxide 70%	1	3
Hydrogen Sulfide Gaseous	1	3
Hydroquinone	0	0
Hydroxylamine Sulfate	0	0
Iodine	0	0
Isobutyl Alcohol	1	1
Iso Octane	1	1
Isopropyl Acetate	1	1
Isopropyl Alcohol	1	1
Isopropyl Ether	1	1
Kerosene	1	1
Ketones	0	0
Lacquers	1	3
Lacquers Solvents	1	3
Lactic Acid	1	3
Lard	1	1
Lead Acetate	1	2
Lead Nitrate	1	2
Lyme Bleach	0	3
Linoleic Acid	1	0
Linseed Oil	1	2
Lubricating Oils, Petroleum	1	1
Magnesium Chloride	1	3
Magnesium Hydroxide	1	1
Magnesium Nitrate	0	0
Magnesium Sulfate	1	2
Malic Acid	1	2
Mercuric Chloride	1	3
Mercury	1	1

D

# Chemical resistance chart

## Eaton Everflex Teflon hoses

D

Media	Eaton Everflex Teflon hose	Eaton Teflon fittings in carbon steel
Mesityl Oxide	1	1
Methanol	1	0
Methyl Acetate	1	1
Methyl Acrylate	0	1
Methyl Alcohol	1	1
Methyl Bromide	1	1
Methyl Butyl Katone	0	1
Methyl Chloride	1	1
Methylene Chloride	1	1
Methylethyl Ketone (MEK)	1	1
Methyl Formate	1	1
Methyl Isobutyl Ketone	1	1
Methyl Methacrylate	1	1
Methyl Salicylate	1	1
Methyl Sulphate	0	0
Methyl Trichlorosilane	0	0
Milk	1	3
Mineral Oil	1	1
Molasses	0	0
Monochlorobenzene	1	1
Monoethanolamine	0	1
Naptha	1	2
Napthalene	1	0
Naphthenic Acid	1	0
Natural Gas	1	1
Nickel Acetate	1	1
Nickel Chloride	1	3
Nickel Nitrate	0	0
Nickel Sulfate	1	0
Niter Cake	0	3
Nitric Acid 5%	1	3
Nitric Acid 10%	1	3
Nitric Acid 30%	1	3
Nitric Acid above 30%	1	3
Nitric Acid, Red Fuming	1	3
Nitrobenzene	1	1
Nitroethane	1	0
Nitrogen, Gaseous	1	1
Nitrogen Tetroxide	0	0
Nitrous Acid	0	0
Nitrous Oxide	0	0
n-Octane	0	1
Octyl Alcohol	1	1
Oil, SAE	1	1
Oleic Acid	1	2
Olive Oil	1	2
Oxalic Acid	1	3
Oxygen Gaseous	1	1
Ozone	1	1

Media	Eaton Everflex Teflon hose	Eaton Teflon fittings in carbon steel
Paint	1	0
Palmitic Acid	1	1
Peanut Oil	1	1
Perchloric Acid	1	0
Perchloroethylene	1	1
Petroleum	1	1
Phenol	1	3
Phorone	1	1
Phosgene	0	0
Phosphoric Acid 20%	1	3
Phosphoric Acid 100%	1	3
Picric Acid	1	3
Pinene	1	1
Pine Oil	1	1
Plating Solutions Brass	0	0
Cadmium	0	0
Chrome	1	0
Potassium Acetate	1	0
Potassium Chloride	1	2
Potassium Cyanide	1	2
Potassium Dichromate	1	0
Potassium Hydroxide 30%	1	3
Potassium Hydroxide 100%	1	3
Potassium Nitrate	1	3
Potassium Sulfate	1	2
Propane	1	1
Propyl Acetate	0	1
Propyl Alcohol	1	1
Pyridine 50%	1	0
Red Oil	1	2
Salicylic Acid	0	0
Salt Water	1	2
Sewage	1	3
Silicone Greases	0	1
Silicone Oils	0	1
Silver Cyanide	0	0
Silver Nitrate	1	2
Skydrol 500 & 7000	1	1
Soap Solutions	1	1
Soda Ash	0	1
Sodium Acetate	1	1
Sodium Benzoate	1	2
Sodium Bicarbonate	1	2
Sodium Bisulfate	1	1
Sodium Borate	1	1
Sodium Chloride	1	2
Sodium Cyanide	1	2
Sodium Chlorate	0	0
Sodium Hydroxide 30%	1	2

# Chemical resistance chart

## Eaton Everflex Teflon hoses

Key:  
 1- Excellent  
 2- Good  
 3- Not recommended  
 0- No Information -  
 test before using

Media	Eaton Everflex Teflon hose	Eaton Teflon fittings in carbon steel
Sodium Hydroxide 40%	1	2
Sodium Hydroxide 100%	1	2
Sodium Chlorite	0	0
Sodium Metaphosphate	1	3
Sodium Nitrate	1	1
Sodium Perborate	1	3
Sodium Peroxide	1	3
Sodium Phosphate	1	0
Sodium Thiosulfate	1	3
Soybean Oil	1	1
Stannic Chloride	1	3
Starch	0	0
Steam	1	1
Stearic Acid	1	3
Stoddard Solvent	1	2
Styrene	1	2
Sucrose Solution	1	1
Sulfur 200°F	1	2
Sulfur Chloride	1	3
Sulfur Dioxide	1	2
Sulfur Dioxide Liquid	1	0
Sulfur Dioxide Wet Gas	1	0
Sulfur Monochloride	0	0
Sulfur Trioxide	1	2
Sulfur Trioxide Liquid	0	0
Sulfur Trioxide Wet Gas	0	0
Sulfuric Acid 10%	1	3
96%	1	3
98%	1	2
100%	1	0
Fuming	1	2
Sulfurous Acid 10%	1	3
Sulfurous Acid 75%	1	3
Tallow	0	0
Tannic Acid 10%	1	2
Tar, Bituminous	1	1
Tartaric Acid	1	0
Tetrachloroethylene	0	0
Terpineol	1	0
Titanium Tetrachloride	0	1
Toluene	1	1
Toluene Disocyanate	0	0
Transformer Oil	1	1
Transmission Fluid Type A	1	1
Tributoxyethyl Phosphate	1	1
Tributyl Phosphate	1	1
Trichloroacetic Acid 10%	0	0
Trichloroacetic Acid 100%	0	0

Media	Eaton Everflex Teflon hose	Eaton Teflon fittings in carbon steel
Trichlorethylene	1	3
Trichloroethylene	1	3
Trichlorophenol	0	0
Tricresyl Phosphate	1	1
Tung Oil	1	1
Turpentine	1	0
Urea Solution 50%	1	1
Urine	1	0
Varnish	0	2
Vegetable Oils	1	1
Versilube	1	1
Vinegar	1	3
Vinyl Acetate	0	0
Vinyl Chloride	1	2
Water	1	2
Whiskey, Wines	1	3
Xylene	1	3
Zinc Acetate	1	1
Zinc Chloride	1	3
Zinc Sulfate	1	3

D



Eaton  
Hydraulics Business USA  
14615 Lone Oak Road  
Eden Prairie, MN 55344  
USA  
Tel: 952-937-9800  
Fax: 952-294-7722  
[www.eaton.com/hydraulics](http://www.eaton.com/hydraulics)

Eaton  
Hydraulics Business Europe  
Route de la Longeraie 7  
1110 Morges  
Switzerland  
Tel: +41 (0) 21 811 4600  
Fax: +41 (0) 21 811 4601

Eaton  
Hydraulics Group Asia Pacific  
Eaton Building  
No.7 Lane 280 Linhong Road  
Changning District,  
Shanghai 200335  
China  
Tel: (+86 21) 5200 0099  
Fax: (+86 21) 2230 7240